

# Ocean RNSYS Opening Regatta

June 2<sup>nd</sup> & 3<sup>rd</sup>, 2018

## SAILING INSTRUCTIONS



### Royal Nova Scotia Yacht Squadron

#### 1 RULES

- 1.1 The regatta shall be governed by the rules as defined by the current edition of *The Racing Rules of Sailing*.
- 1.2 The prescriptions of Sail Canada shall apply.
- 1.3 Rules of the Sail Nova Scotia PHRF-NS fleet and any other applicable class association shall apply.
- 1.4 Handicap fleet boats shall abide by the Sail Nova Scotia PHRF recommended crew limits as outlined in the table below.

<u>LOA (feet)</u>	<u>Max Crew</u>	<u>LOA (feet)</u>	<u>Max Crew</u>
Below 20	4	38, 39	11
20, 21, 22	5	40, 41	12
23, 24, 25	6	42, 43	13
26, 27, 28	7	44, 45	14
29, 30, 31	8	46, 47	15
32, 33, 34	9	48, 49	16
35, 36, 37	10	50 and up	17

#### 2 NOTICES TO COMPETITORS

Notices to competitors shall be posted on the official notice board located at the entrance to the Ward Room.

#### 3 CHANGES TO SAILING INSTRUCTIONS

Any change to the sailing instructions shall be posted before 0900hr on the day it will take effect, except that any change to the schedule of races shall be posted by 1800hr on the day before it will take effect.

#### 4 SIGNALS MADE ASHORE

- 4.1 Signals made ashore shall be displayed from the flagstaff on the water side of the RNSYS Clubhouse.
- 4.2 When flag AP is displayed ashore, "1 minute" is replaced with "not less than 60 minutes" in the race signal AP.
- 4.3 When flag Y is displayed ashore, Rule 40 applies at all times while afloat. This changes the Part 4 preamble.

## 5 SCHEDULE OF RACES

- 5.1 Dates of racing are Saturday June 2<sup>nd</sup> and Sunday June 3<sup>rd</sup>, 2018.
- 5.2 Number of races:
- | <i>Class</i>    | <i>Number</i> |
|-----------------|---------------|
| Handicap        | up to 7       |
| One Design      | up to 7       |
| Big Boat Rumble | 1             |
- 5.3 A competitor's meeting will be held in or near the Ward Room at 0900hr on Saturday and Sunday.
- 5.4 The scheduled time of the warning signal for the first race on both days is 1100hr.

## 6 CLASS SPLITS & CLASS FLAGS

- 6.1 Class splits and boat assignments will be set after final registration/check-in (NoR 4.1). The Race Committee reserves the right to sort boats by parameters other than handicap. Class splits shall be posted on the official notice board no later than 0915hr on Saturday.

- 6.2 Class flags shall be:

<u>Class</u>	<u>Flag</u>
A	Dark Blue
B	Red
C	Green
Farr 30	Yellow
BBR	Laser Red

## 7 RACING AREA

- 7.1 Races shall be run in Halifax Harbour. The Sail Nova Scotia Course Card shows the racing area and is available online in the Race Documents area of the RNSYS website <<http://rnsys.com/sailing/race-documents.html>>.
- 7.2 One Design and Handicap fleets will race in the same area, using the same start and finish lines and signal vessel.

## 8 THE COURSES

- 8.1 The courses will be either Harbour Mark or Windward/Leeward courses for the Handicap classes and Windward/Leeward for the one design classes.
- 8.2 Prior to the warning signal, the race committee signal boat will display the course for each Handicap class indicating the order in which the marks are to be rounded and the side to which they are to be left. 'P' will indicate a port rounding, 'S' a starboard rounding.
- 8.3 Windward/Leeward courses will be identified by a numeral pennant flown before and during the start sequence for that class; either 1, 2 or 3 (see Attachment A).

## 9 MARKS

- 9.1 The Sail Nova Scotia Course Card shows the marks to be used except that the following changes are to be made:
- |         |                               |
|---------|-------------------------------|
| Mark 82 | Yellow inflatable tetrahedron |
| Mark 84 | Orange inflatable tetrahedron |
| Mark 28 | Yellow inflatable cylinder    |
| Mark 29 | Orange inflatable cylinder    |

- 9.2 The following navigational buoys shall be passed on their proper side, unless they are marks of the course:
- |                   |     |                  |     |
|-------------------|-----|------------------|-----|
| Hens and Chickens | HQ2 |                  |     |
| Purcell's Cove    | HQ1 | Ives Knoll North | HT2 |
| Point Pleasant    | H19 | Ives Knoll West  | H22 |
- 9.3 The start and finish marks shall be yellow inflatable pins.
- 9.4 When sailing a windward/leeward course, Handicap A, B and Farr 30 classes shall use a yellow tetrahedron as mark 1 (windward mark, see Attachment A).
- 9.5 When sailing a windward/leeward course, The Handicap C classe shall use an orange tetrahedron as mark 1 (windward mark, see Attachment A).
- 9.6 All classes sailing windward/leeward courses shall use yellow tetrahedrons as the leeward marks (mark Gate, see Attachment A).
- 9.7 Marks shall be rounded as illustrated in Attachment A.
- 9.8 Yachts shall visually identify all marks of the course.
- 9.9 The change mark for the Farr 30 class, Handicap A and B classes (if sailing a windward/leeward course) shall be a yellow cylinder.
- 9.10 The change mark for the Handicap C class (if sailing a windward/leeward course) shall be an orange cylinder.

## 10 THE START

- 10.1 Races shall be started by using Rule 26 with the warning signal given 5 minutes before the starting signal.
- 10.2 The starting line shall be between a staff displaying an orange flag on the signal boat and the start mark on the port side of the signal boat.
- 10.3 Boats whose warning signal has not been made shall avoid the starting area. The starting area is defined as a 75-metre radius around the starting line and its marks.
- 10.4 A boat starting later than 5 minutes after her starting signal will be scored Did Not Start without a hearing. This changes Rule A4.
- 10.5 The race committee will attempt to broadcast on VHF channel 72 or hail the sail number of boats that are OCS. Failure to make a broadcast or to time it accurately will not be grounds for a request for redress. This changes Rule 62.1(a).

## 11 CHANGE OF THE NEXT LEG OF THE COURSE

- 11.1 For fleets sailing a harbour mark course, to change the next leg of the course, the race committee vessel signalling the change shall indicate the new course using a list of the new marks and the sides on which they are to be left. This changes Rule 33.
- 11.2 For fleets sailing a windward/leeward course a change of course will indicate a change of the windward mark.
- 11.3 During the race, marks may be repositioned without signal for minor changes in the course. This changes Rule 33.
- 11.5 For all classes sailing a windward/leeward course the new weather mark shall be as indicated in SI 9.9 and SI 9.10. When in a subsequent change of course a new windward mark is replaced, it will be replaced with an original mark. The Race Committee will remove the old windward mark as soon as practical.

## **12 THE FINISH**

The finish line shall be between a staff displaying an orange flag on the signal boat and the finish mark **on the starboard side** of the signal boat.

## **13 INTERFERENCE WITH SHIPPING**

- 13.1 Yachts shall not interfere with the orderly passage of any naval or commercial ship. Any yacht that breaks this instruction shall be subject to protest by the Race Committee and may be denied entry to subsequent events following investigation by Sail Nova Scotia. All yachts are encouraged to monitor VHF channel 12, Halifax Traffic Control, while in Halifax harbour.
- 13.2 Engines may be used in an emergency. Details are to be reported to the Race Committee and requests for redress under Rule 62 may be made.

## **14 TIME LIMITS**

- 14.1 For all Handicap classes except the Big Boat Rumble the time limit shall be 3 hours after their respective starts or 45 minutes after the first boat in the class sails the course and finishes, whichever is sooner.
- 14.2 For the one design classes the time limit shall be 3 hours or 15 minutes after the first boat in the class sails the course and finishes, whichever is sooner.
- 14.3 For the Big Boat Rumble the time limit shall be 5 hours or 45 minutes after the first boat in the class sails the course and finishes, whichever is later.
- 14.4 Boats failing to finish within these times shall be scored Did Not Finish without a hearing. This changes Rules 35 and A4.

## **15 PROTESTS AND REQUESTS FOR REDRESS**

- 15.1 Protest forms are available from the Sailing Office on the third floor of the Clubhouse. Protests shall be delivered to the Sailing Office within the protest time limit.
- 15.2 For all classes, the protest time limit shall be one (1) hour after the signal boat docks.

## **16 SCORING**

- 16.1 One (1) race is required to be completed to constitute a series.
- 16.2 For all competitors a boat's series score shall be the total of her race scores (no drops).

## **17 SAFETY REGULATIONS**

- 17.1 Each yacht shall inform the RC of her intention to race either via VHF channel 72 or by sailing past the stern of the RC vessel and hailing before the first warning signal of the day. Check-in is not complete until a response is received from the RC.
- 17.2 A boat that retires from a race shall notify the appropriate race committee as soon as possible.

## **18 HAUL-OUT RESTRICTIONS**

Keelboats shall not be hauled out during the regatta except with and according to the terms of prior written permission of the race committee.

## **19 DIVING EQUIPMENT AND PLASTIC POOLS**

Underwater breathing apparatus and plastic pools or their equivalent shall not be used around keelboats between the preparatory signal of the first race and the end of the regatta.

## **20 RADIO COMMUNICATIONS**

- 20.1 Except in an emergency, a boat shall neither make radio transmissions while racing nor receive radio transmissions not available to all boats. Mobile telephones shall not be used to obtain information relevant to the race that is not available to all boats.
- 20.2 The Race Committee will use VHF channel 72 for broadcasts to competitors and as the main working channel.

## **21 PRIZES**

- 21.1 Prizes will be awarded on Sunday at 1800hr.
- 21.2 Overall prizes for the regatta will be awarded for the top three (3) finishers in each class.

## **20 DISCLAIMER OF LIABILITY**

By participating in this event and any related activity sponsored or undertaken by the Royal Nova Scotia Yacht Squadron, the owner, person in charge and each crew member agree: that they understand that sailing is an activity that has an inherent risk of serious bodily injury (including permanent disability, paralysis and death by drowning or otherwise), property damage and other economic loss; that the safety of the boat and her crew and the decision whether or not to start or continue to race is solely their responsibility and at their own risk, see RRS 4 "Decision to Race"; that the Royal Nova Scotia Yacht Squadron and its officers, trustees, members, committees, employees, sponsors, or agents will not be responsible for damage to any boat or other property, or to any participant, including injury or death; and that each of them releases and waives all claims which he or she, or any heir, representative, successor or assignee, may have against the Royal Nova Scotia Yacht Squadron and its officers, trustees, members, committees, employees, sponsors or agents, arising out of or in any way connected with participation in such race or activity. Assistance, if any, from the race committee or other Royal Nova Scotia Yacht Squadron vessels, or from any personnel manning them, is at the risk of the participant.

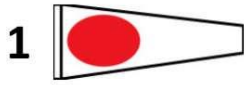
## **21 INSURANCE**

Participating yachts shall be insured with valid third-party liability insurance with a minimum coverage of \$1,000,000 per event or the equivalent.

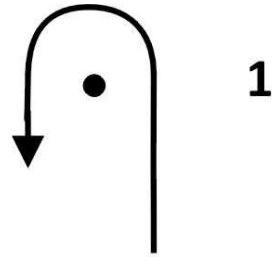
## **22 FURTHER INFORMATION**

For further information please contact the RNSYS Race Director at [racedirector@rnsys.com](mailto:racedirector@rnsys.com) or (902) 477-5653 ext.109 or the Vice Commodore of Sailing at [vc sailing@rnsys.com](mailto:vc sailing@rnsys.com).

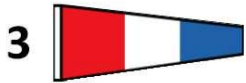
Attachment A



Start - 1 - Finish



Start - 1 - Gate - 1 - Finish



Start - 1 - Gate - 1 - Gate - 1 - Finish

